

## Invasive species

Invasive species of plants such as Japanese Knotweed, Giant Hogweed and Himalayan Balsam are a real threat to our rivers and native wildlife. Report any sightings of them online at:

<https://ywt-data.org/inns-mapper/home>



Phillip Precey

Japanese knotweed



Giant hogweed



Carys Hutton

Himalayan balsam

### Never move wildlife around!

Please don't allow pets or plants from your garden or home to invade the countryside.

**Call the Environment Agency Incident Hotline on 0800 80 70 60 if you see...**

- Damage or danger to the natural environment
- Pollution to water or land
- Poaching or illegal fishing
- Dead fish or fish gasping for air
- Main rivers blocked by a vehicle or fallen tree causing risk of flooding
- Flooding from any river, stream, canal, natural spring or the sea
- Illegal removals from watercourses

## About us

Greenstreams and River Holme Connections work together to improve local rivers for all to enjoy. We work closely with businesses, landowners and volunteers and welcome support from local people who want to make our rivers healthier.

### Get involved:

- Join us for regular work parties and events
- Help to record wildlife in your local area

[www.greenstreams.org.uk](http://www.greenstreams.org.uk)

[www.riverholmeconnections.org.uk](http://www.riverholmeconnections.org.uk)



River Holme Connections

Volunteers for River Holme Connections



**Yorkshire**  
Wildlife Trust

Yorkshire Wildlife Trust is a local charity working to create a Yorkshire rich in wildlife for everyone. We are working in the local area to protect, restore and recover wildlife so that more people have a strong connection to nature. Find out more at [ywt.org.uk](http://ywt.org.uk).

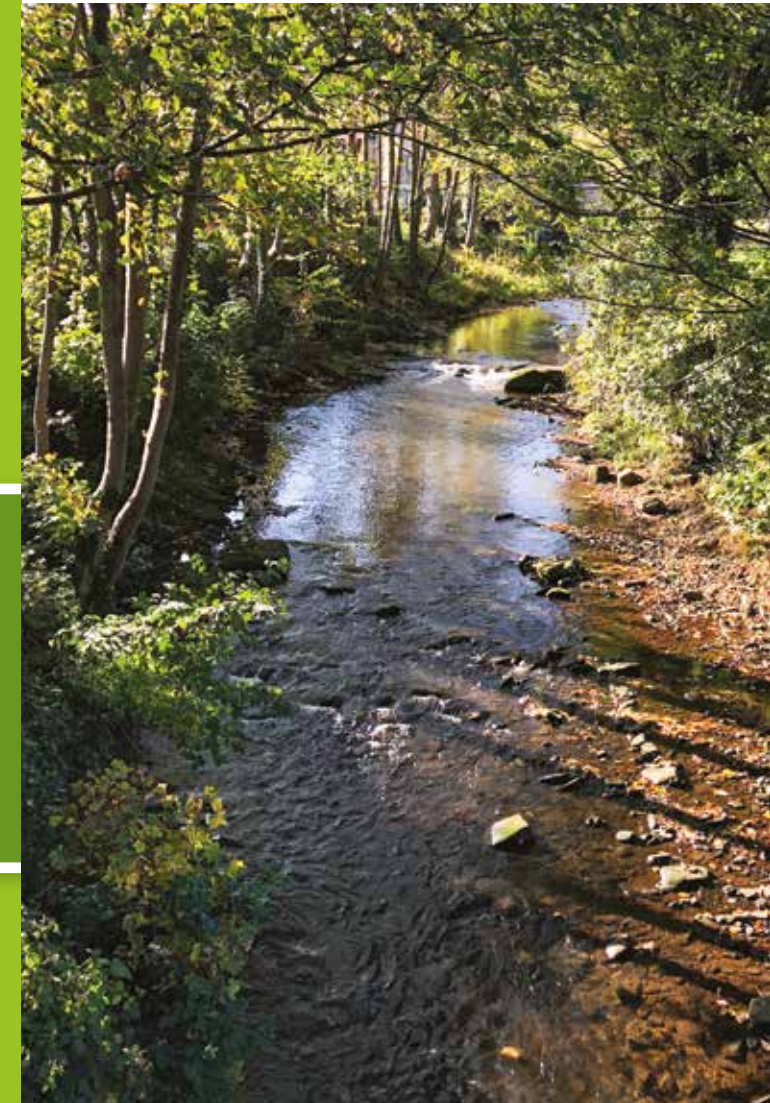


This leaflet was made possible through funding from the Aire and Calder Catchment Partnership

Cover Photo: **River Holme** (River Holme Connections)



## Discovering the wildlife of the Colne and Holme



## Wildlife of the River Holme and Colne

Here are some of the birds, plants, animals and insects you can see along the river.



Bumblebee

John Hawkins



Brown trout

Jack Perks



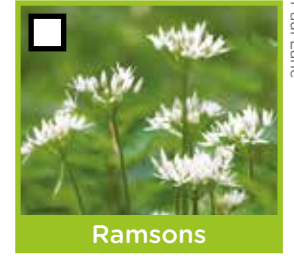
Pipistrelle bat

Tom Marshall



Bluebells

Elliott Neep



Ramsons

Paul Lane



Orange tip butterfly

Vicky Nall



Ringlet butterfly

Dave Williamson



Kingfisher

Elliott Neep



Little grebe

Margaret Holland



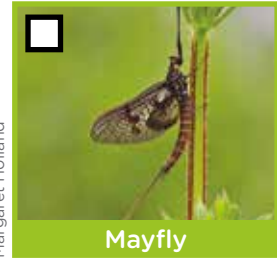
Cuckoo flower

Tom Marshall



Alder

Jeff Keenyside



Mayfly

Margaret Holland



Caddis fly

Margaret Holland



Heron

Martin Batt



Water rail

Ron Egan



Oak

Jim Horsfall



Pussy willow

Jeff Keenyside



Common frog

Paddy Hall



Mallard

Ravi Singh



Grey wagtail

Elliott Neep



Dipper

Mark Davison



Water Vole

Simon Booth



Otter

Ron Egan



Goosander

Martin Batt



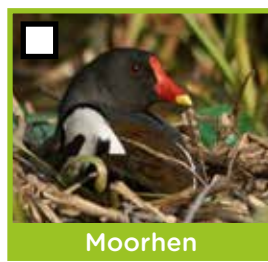
Tufted duck

Ron Egan



Coot

Ron Egan



Moorhen

Ron Egan



Mink

Ron Egan

**Otter or Mink?**  
Mink are often mistaken for otters. Otters are larger than mink, have a rounded nose and a tapering, short-haired tail.